



WDC 5th Annual Meeting

May 9-10 2007

Jerusalem, Israel

Report of the WDC Technical Committee

M. Van Bockstael

Chairman, Technical Committee WDC



Content

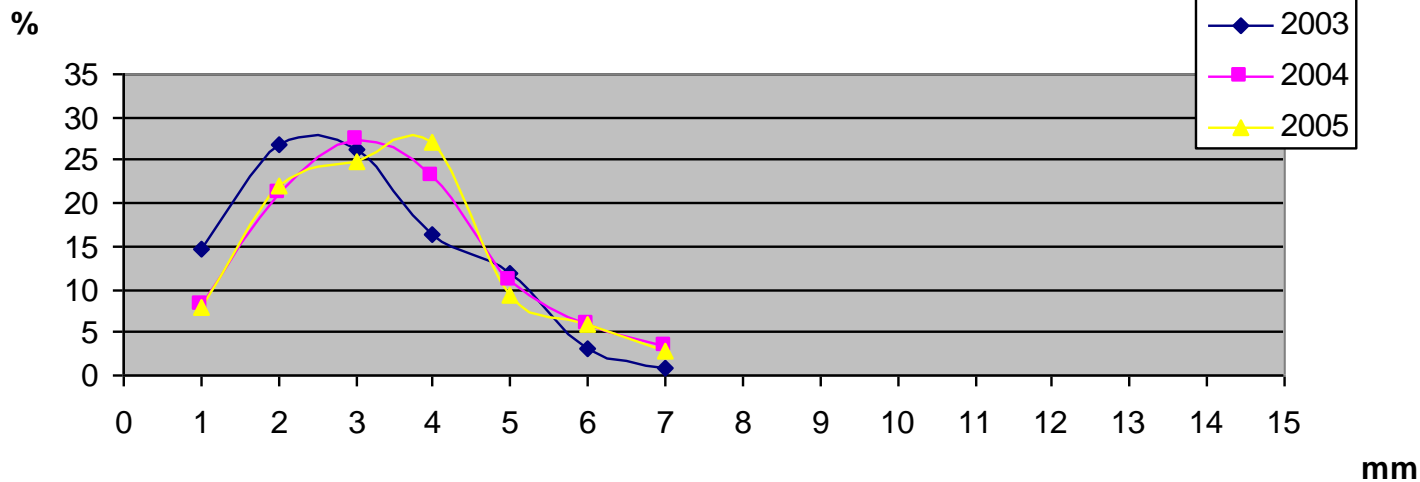
- Origin Verification
- WDC Technical Assistance Mission to Ghana

ORIGIN VERIFICATION

Develop Size Frequency Distribution Diagram or “Footprint” into statistical monitoring tool

Sieves	- 6	+ 6 à - 10	+ 10 à - 15	+ 15 à - 19	0,75 à 1,50	2 ct	=, >3 ct	Summation
MM	-2,159	+2,159 -3,277	+3,277 -5,41	+5,41 -6,35	+4,089 -6,35	+5,74 -7,925	=,> +6,35 -10,312	
Formula	<	><	><	><	><	><	><	

Size Frequency Distribution Diagram



Tot 2004	9.872,97	25.817,59	33.327,32	28.178,87	13.402,53	7.330,20	4.153,66	122.083,14
%	8,1	21,1	27,3	23,1	11,0	6,0	3,4	100
	937,50	2.573,50	2.906,40	3.180,00	1.083,00	708,30	334,30	11.723,00
	3,30	8,20	10,40	13,00	7,40	4,60	3,53	50,43
Tot 2005	940,80	2.581,70	2.916,80	3.193,00	1.090,40	712,90	337,83	11.773,43
%	8,0	21,9	24,8	27,1	9,3	6,1	2,9	100



ORIGIN VERIFICATION

Use digital photographs to capture key features of diamond production from any given area

- refloat “Virtual Experts Network”



WDC Technical Assistance Mission to Ghana

- Technical Assistance offered by WDC at KP Plenary in Botswana
- From November 24, 2006 through February 2007
- Three WDC Teams (A-B-C)
- Tasked to verify Ghana origin of rough diamonds prior to being exported



WDC Technical Assistance Mission to Ghana

	Arrival Date	Departure Date
Team A	Monday, 4 December 2006	Friday, 8 December 2006
Team B	Monday, 15 January 2007	Friday, 19 January 2007
Team C	Monday, 12 February 2007	Friday, 16 February 2007

	Team Members	Organisation
Team A	Andrew Coxon – Team Leader Frank Govic	De Beers BHP Billiton
Team B	Andrew Coxon – Team Leader Rodney Baynard Antony Dear	De Beers Rio Tinto Diamonds BHP Billiton
Team C	Andrew Coxon – Team Leader Hilde Denckens	De Beers HRD Diamond Office



WDC Technical Assistance Mission to Ghana

Observations

	Number of Exports	Carats	Destination
Team A	6	42806.64	Belgium (4); India (1); Israel (1)
Team B	9	82948.18	Belgium (5); India (2); Israel (2)
Team C	7	81785.87	Belgium (4); India (1); Israel (2)

1. Each shipment has been digitally photographed
2. A size distribution footprint is as yet not possible at this stage as exporters use different sieve sizing



WDC Technical Assistance Mission to Ghana

Observations

3. Some companies deep boil goods in acid which gives different appearance to unwashed goods. Some goods given cold rinse in acid which is different again. Note three different appearances for Ghana goods before export: deep boiled, acid-rinsed and unwashed to being exported
4. 95% of the production comes from the Akwatia region
5. Approximately 30% of these goods come from the Birim River
6. There is a strong resemblance of the Ghanaian Birim River goods to the Guyana production in South America



WDC Technical Assistance Mission to Ghana

Observations

7. The average price of the Ghanaian goods is approximately \$20 - \$40 per carat as opposed to the \$150 - \$200 per carat that was previously the exported average of the Ivory Coast



WDC Technical Assistance Mission to Ghana

Recommendations

1. Suggest to introduce a standardised sieving regime for exported goods in order to gain a footprint. Suggest that all exporters use the following commercial sieve sizes (not DTC):

-21+17

-17+15

-15+10

-10+7

-7+3

-3+2

-2



WDC Technical Assistance Mission to Ghana

Recommendations

2. In +15 sieve size recommend extracting brown, green and cape colour goods and require a separate section on the export form for these goods
3. Install signs in Diamond House in Accra, warning that any goods found in the building of a non-Ghanaian origin (...) would be confiscated and that their owners would be prosecuted.



WDC Technical Assistance Mission to Ghana

Conclusions

- The WDC Technical Experts **did not come about any instances where non-Ghanaian rough diamonds could be identified** in shipments made ready for export.
- All examined export shipments have been **in full compliance** with the KPCS minimum requirements and with the Administrative Decision on a Review Mission to Ghana.
- The Teams are fully confident that they have **witnessed and monitored all official export shipments** between December 4 2006 and February 16, 2007.



WDC Technical Assistance Mission to Ghana

A Big Thanks...

- The Kimberley Process and the WDC Technical Committee owe a big thanks **to Mr. Andrew Coxon** as Team Leader **and to the excellent Members of his teams!!!**

END